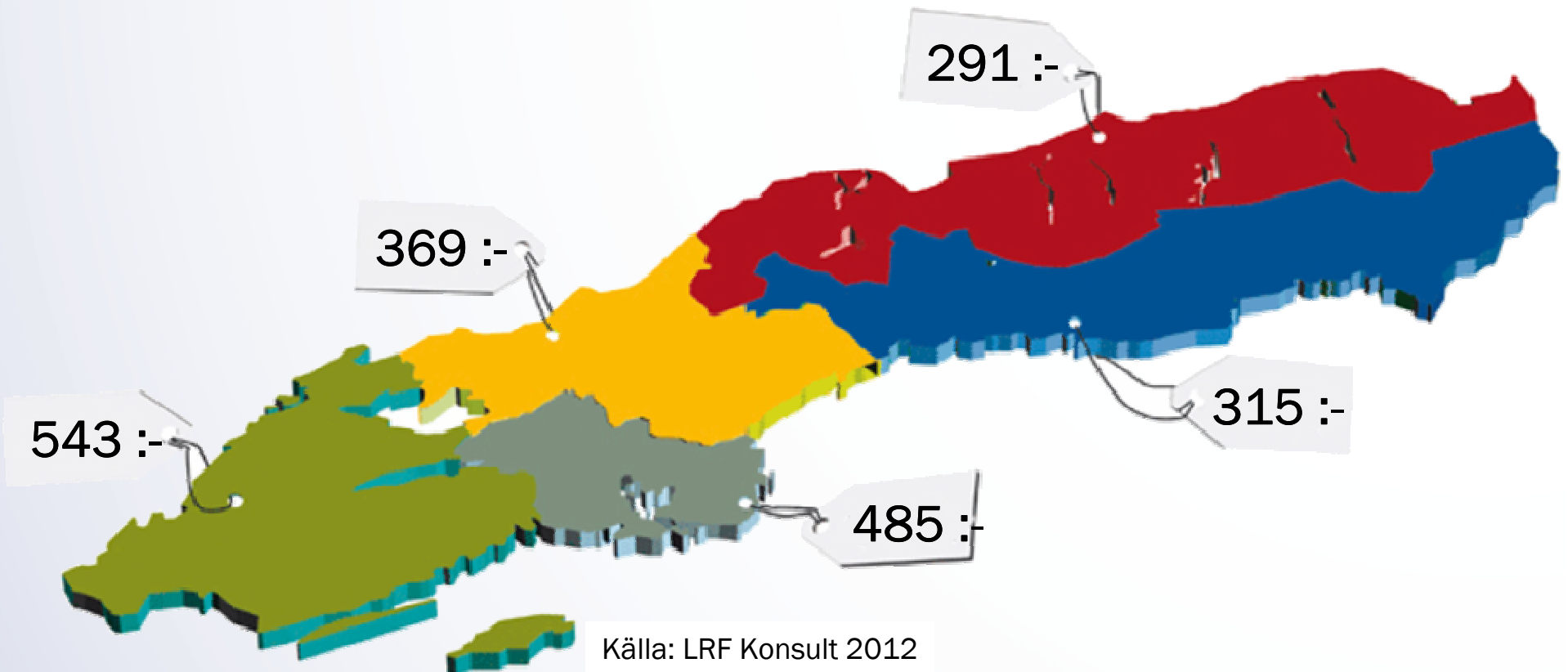




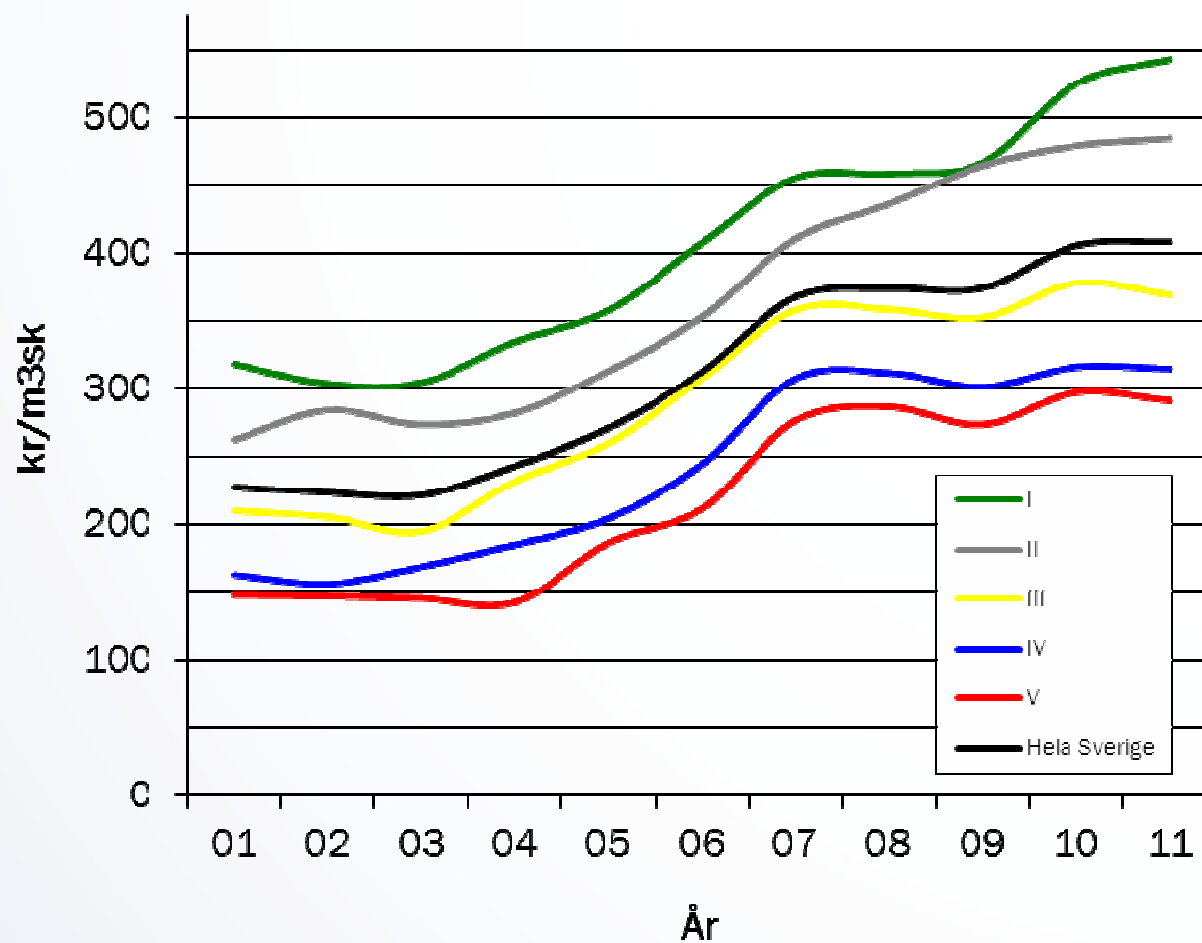
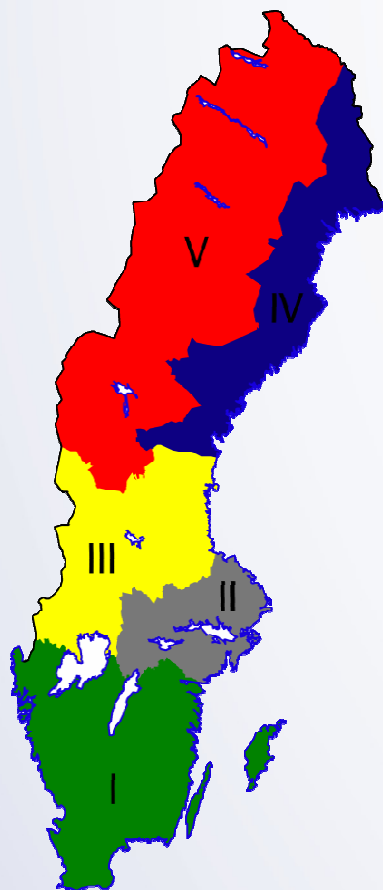
Skogspriser Helår 2011

Skogspriser



Skogspriser

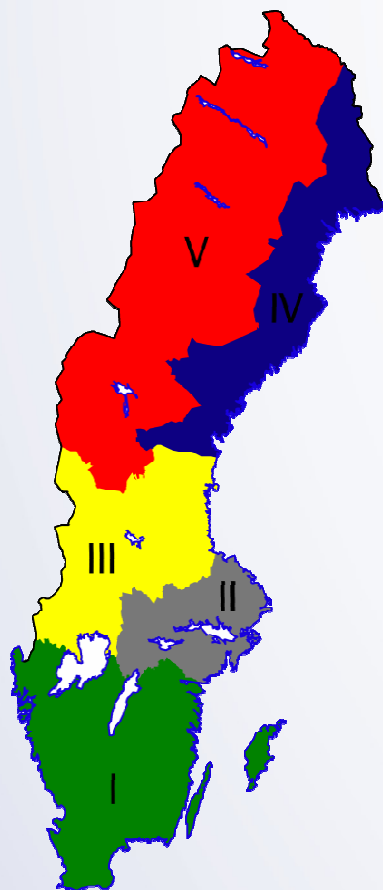
Real prisutveckling 2001 till 2011



24 januari 2012

© LRF KONSULT

Skogspriser

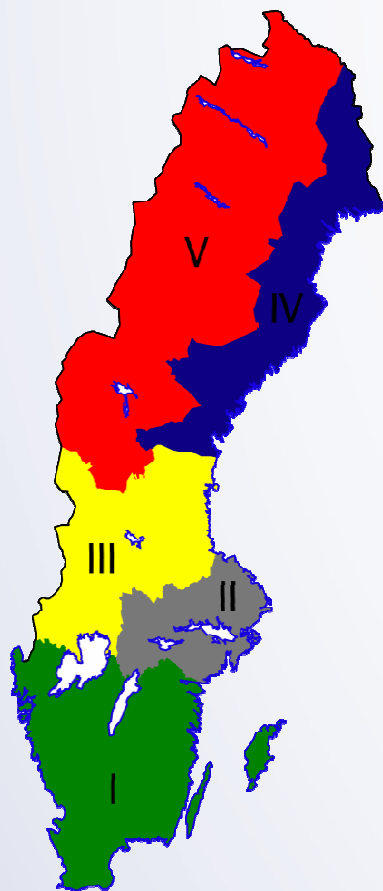


Real	2001	2002	2003	2004	2005	2006	2007	2008	2009	2010	2011
V	148	147	146	143	187	211	277	287	273	297	291
IV	163	156	169	185	204	244	308	312	301	316	315
III	210	205	195	232	260	308	358	358	352	378	369
II	262	284	273	282	313	353	411	436	465	479	485
I	318	304	305	335	358	408	456	458	467	525	543
Hela Sverige	227	224	222	243	271	312	368	374	374	406	408

24 januari 2012

© LRF KONSULT

Skogspriser, procentuell utveckling



	1år	5 år	10 år
V	- 2	38	97
IV	0	29	93
III	- 2	20	76
II	1	37	85
I	3	33	71
Hela Sverige	1	31	80

Skogspriser – trender senaste 10 åren

Real prisutveckling 2001 till 2011

