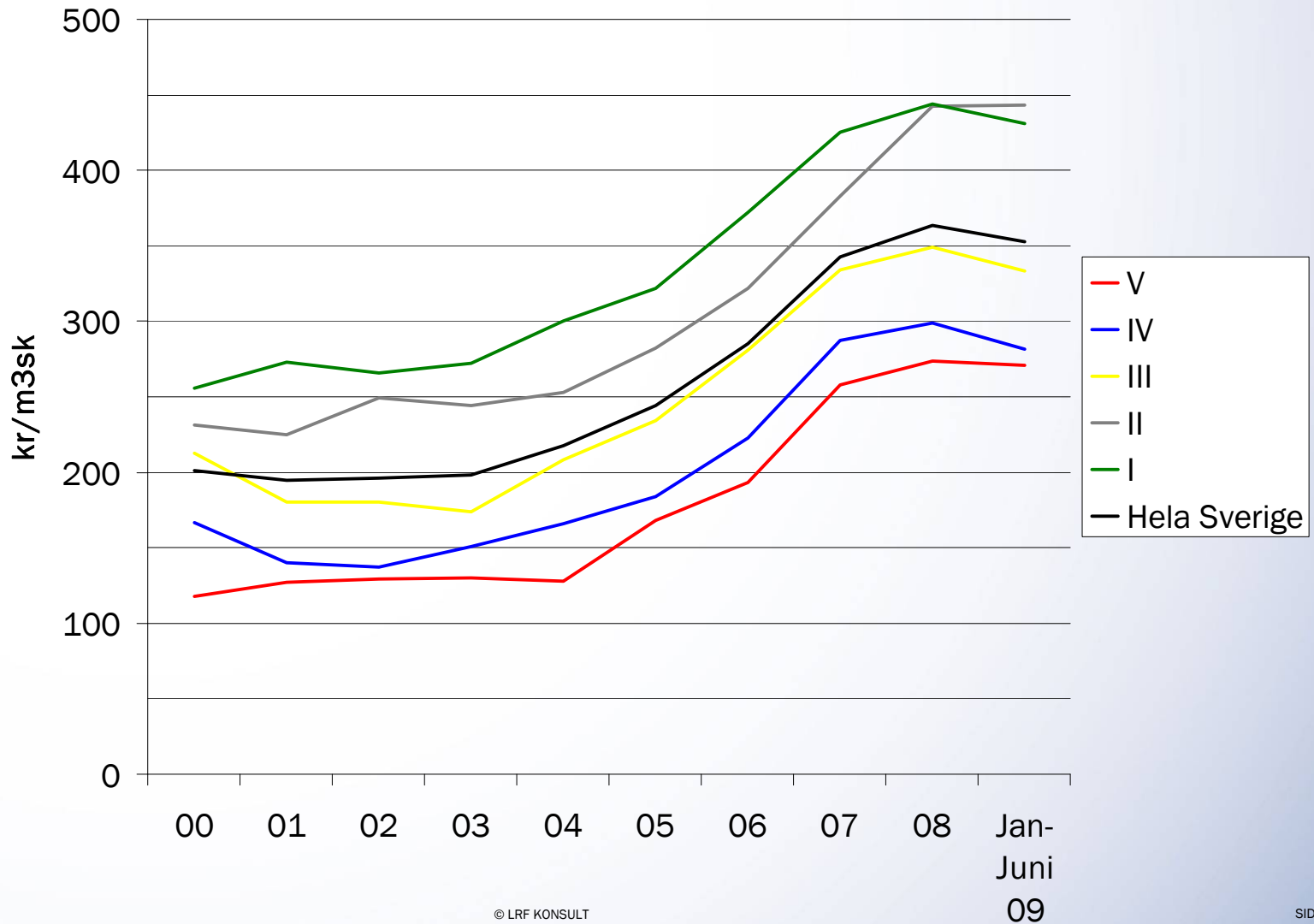
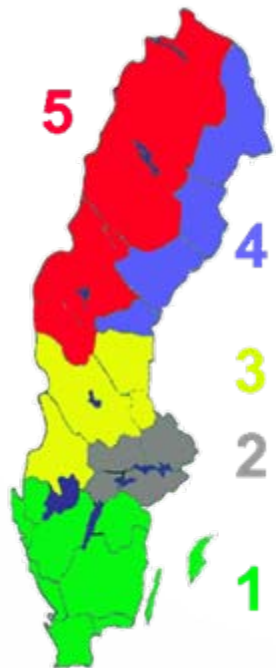
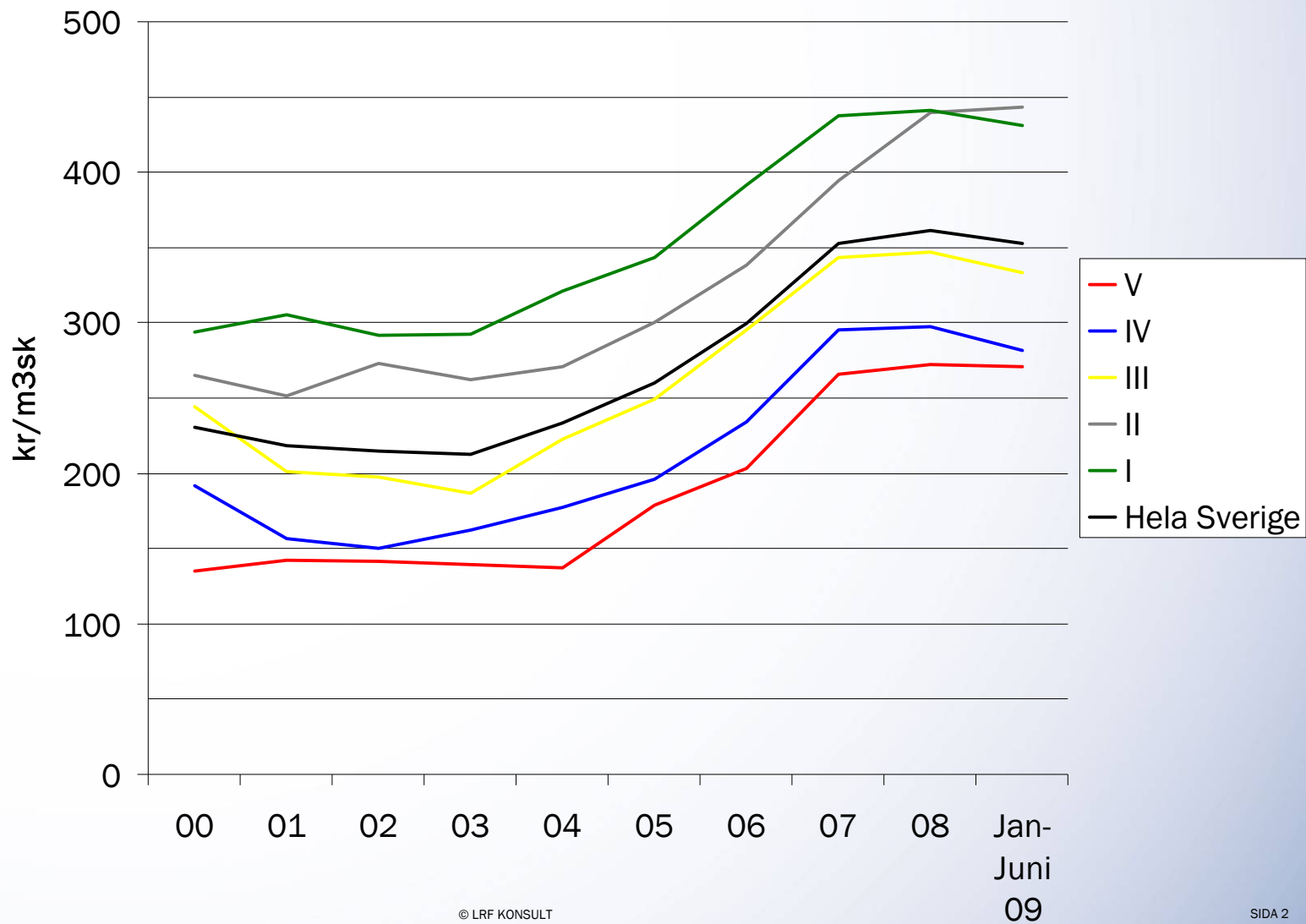


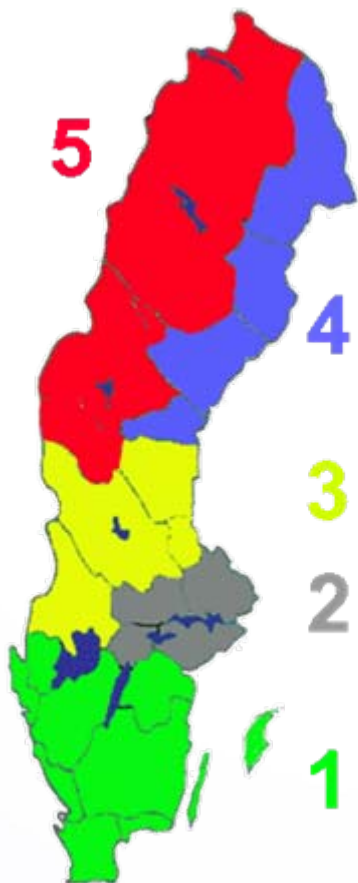
Nominell prisutveckling 2000-2009



Real prisutveckling 2000-2009

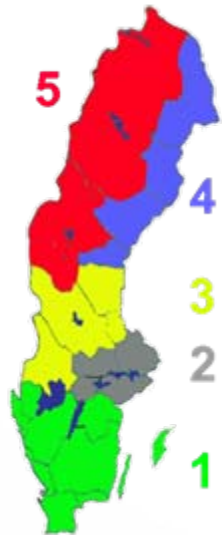


Skogspriser, nominella



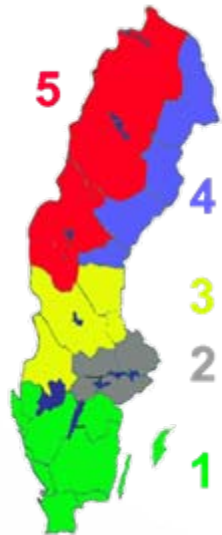
	04	05	06	07	08	Jan-Juni 09	%
V	128	168	193	258	274	271	-1,1
IV	166	184	223	287	299	281	-6,0
III	208	234	281	334	349	333	-4,6
II	253	282	322	383	442	443	0,2
I	300	322	372	425	444	431	-2,9
Riks	218	244	285	343	364	353	-3,0

Skogspris kr/m³sk, nominella



	2004	2009	%-ökning
V	128	271	+ 111,8
IV	166	281	+ 69,4
III	208	333	+ 60,3
II	253	443	+ 75,1
I	300	431	+ 43,8
Hela Sverige	218	353	+ 61,9

Skogspris kr/m³sk, reala



	2004	2009	%-ökning
V	137	271	+ 97,8
IV	178	281	+ 58,3
III	223	333	+ 49,7
II	271	443	+ 63,6
I	321	431	+ 34,3
Hela Sverige	233	353	+ 51,2